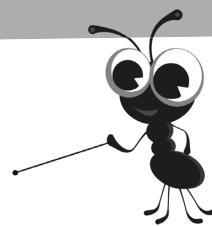


Name: _____ Date: _____

Percentage mix up



Know percentage and decimal equivalents of fractions

The percentage, fraction and decimal table on the left has been mixed up and some percentages and decimals have been left out.

- Write the correct version in the table on the right. Make sure to write the equivalent percentages, fractions and decimals in order, smallest to largest.
- There are eighths included, so think carefully as to how you will work out the equivalent percentage and decimal.

Hint

Use the relationship between quarters and eighths to help.

Percentage	Fraction	Decimal
	$\frac{1}{4}$	
70%	$\frac{1}{8}$	0.25
	$\frac{2}{5}$	
	$\frac{4}{5}$	
	$\frac{1}{2}$	0.8
25%	$\frac{3}{5}$	
	$\frac{3}{10}$	0.7
	$\frac{6}{8}$	
40%	$\frac{9}{10}$	
	$\frac{3}{4}$	0.4
	$\frac{3}{8}$	
30%	$\frac{7}{10}$	

Percentage	Fraction	Decimal