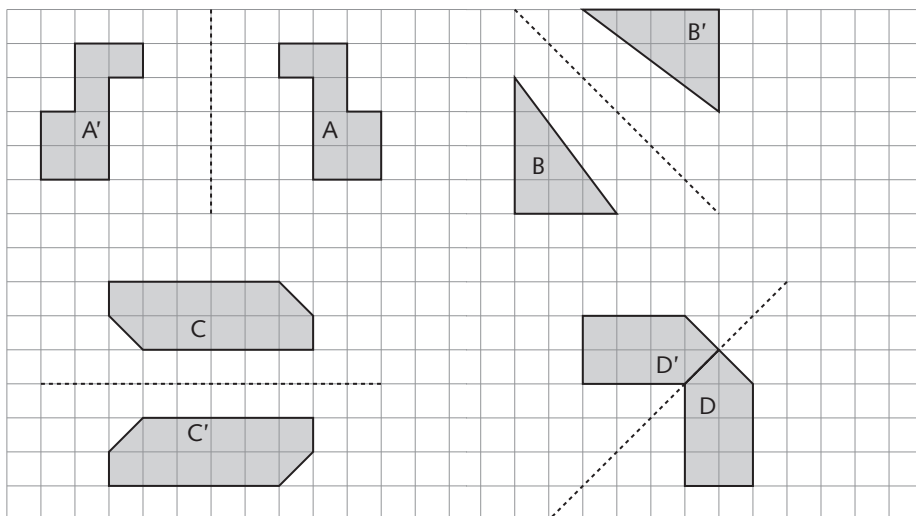
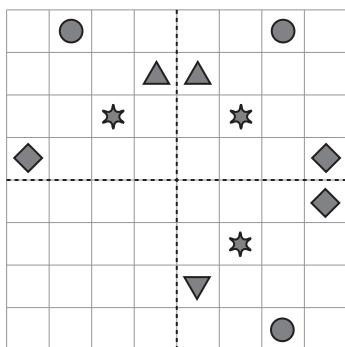


1 Draw the reflection of each shape in the line of symmetry.

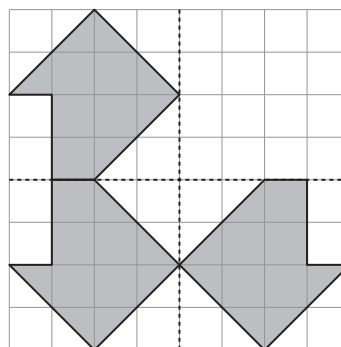


You will need:
• ruler

2 Draw the reflection of the pattern in both lines of symmetry.

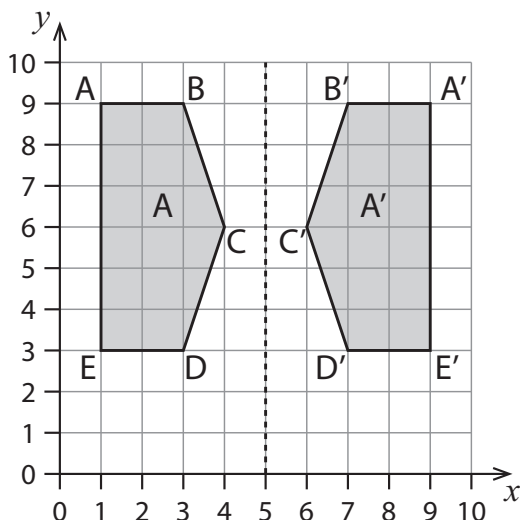


3 Draw the reflection of the shape in both lines of symmetry.



4 Reflect Shape A in the axis of symmetry. Label the image A'.

Write the coordinates of each point for Shapes A and A'.



Point	Shape A	Shape A'
A	(1 , 9)	(9 , 9)
B	(3 , 9)	(7 , 9)
C	(4 , 6)	(6 , 6)
D	(3 , 3)	(7 , 3)
E	(1 , 3)	(9 , 3)

1
4 marks

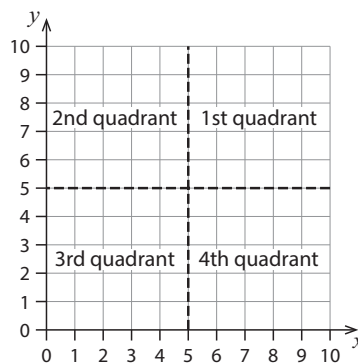
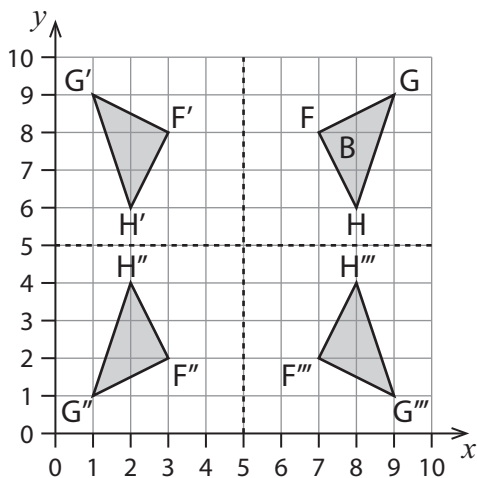
2
1 mark

3
1 mark

4
2 marks

5 Reflect Shape B into the other three quadrants.

Complete the table for points F, G and H and their images in each quadrant.



5
2 marks

1st quadrant	2nd quadrant	3rd quadrant	4th quadrant
F (7 , 8)	F' (3 , 8)	F'' (3 , 2)	F''' (7 , 2)
G (9 , 9)	G' (1 , 9)	G'' (1 , 1)	G''' (9 , 1)
H (8 , 6)	H' (2 , 6)	H'' (2 , 4)	H''' (8 , 4)