

# Vertebrate or Invertebrate Dominoes

This game is played in groups of 3 or 4.

Shuffle the dominoes and give three to each player.

One domino is placed face up on the table to start the game, the rest are placed face down in a pile.

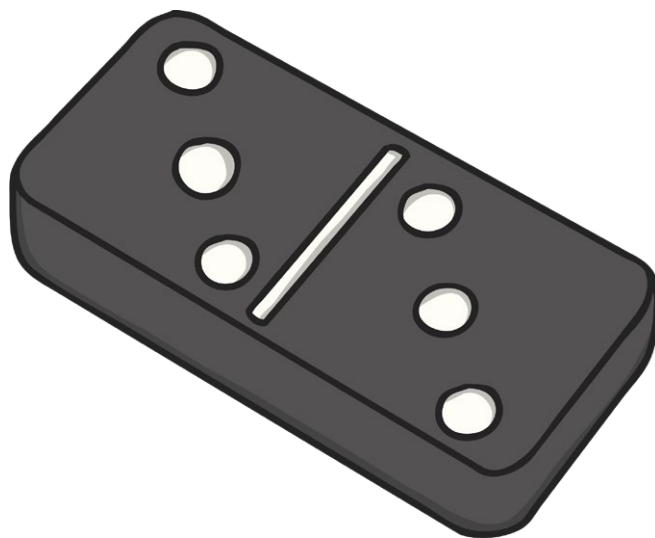
The first player selects one of their dominoes and matches one end of it to either end of the starting domino.

For it to be a correct match, it must be a picture of an animal that matches the correct description of invertebrate or vertebrate (e.g. a picture of a snail correctly matches the word invertebrate).

They then take another domino from the pile and the next player takes their turn.

Players score a point for every correctly placed domino and lose a point for playing a domino incorrectly.

The game ends when the pile of spare dominoes is empty.





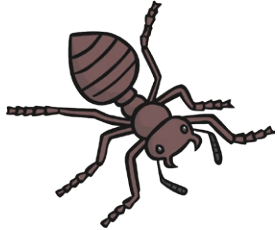
**invertebrate**

twinkl.co.uk



**vertebrate**

twinkl.co.uk



**vertebrate**

twinkl.co.uk



**invertebrate**

twinkl.co.uk



**vertebrate**

twinkl.co.uk



**vertebrate**

twinkl.co.uk



**invertebrate**

twinkl.co.uk



**invertebrate**

twinkl.co.uk



**vertebrate**

twinkl.co.uk



**vertebrate**

twinkl.co.uk



**invertebrate**

twinkl.co.uk



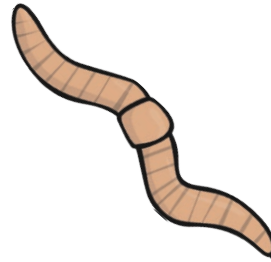
**vertebrate**

twinkl.co.uk



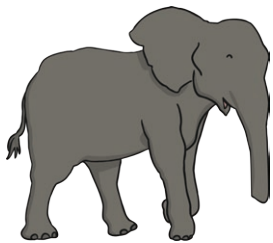
**vertebrate**

twinkl.co.uk



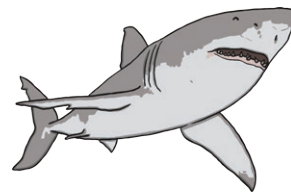
**invertebrate**

twinkl.co.uk



**invertebrate**

twinkl.co.uk



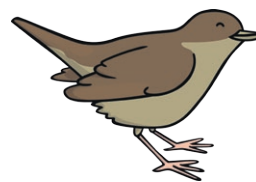
**vertebrate**

twinkl.co.uk



**invertebrate**

twinkl.co.uk



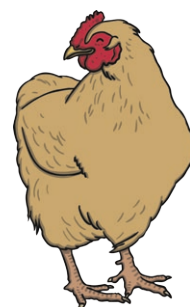
**vertebrate**

twinkl.co.uk



**invertebrate**

twinkl.co.uk



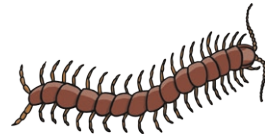
**invertebrate**

twinkl.co.uk



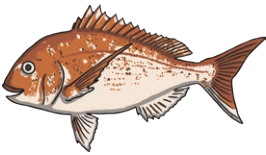
**vertebrate**

twinkl.co.uk



**invertebrate**

twinkl.co.uk



**invertebrate**

twinkl.co.uk



**vertebrate**

twinkl.co.uk



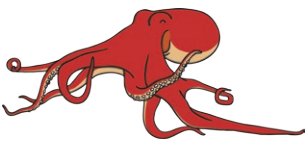
**vertebrate**

twinkl.co.uk



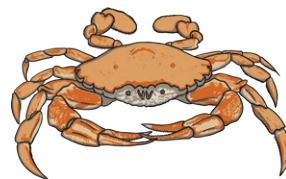
**vertebrate**

twinkl.co.uk



**invertebrate**

twinkl.co.uk



**invertebrate**

twinkl.co.uk



**invertebrate**

twinkl.co.uk



**vertebrate**

twinkl.co.uk



**invertebrate**

[twinkl.co.uk](https://www.twinkl.co.uk)