

Journey Day

Global Citizens

What are our School Values?

Pairs Challenge

1. Respectful
2. Resilient
3. Inquisitive
4. Ambitious
5. Healthy
6. Compassionate
- 7. Global Citizens**




What does being a 'Global Citizen' mean?

A global citizen is someone who is aware of and understands the wider world – and their place in it. They take an active role in their community and work with others to make our planet more peaceful, sustainable and fairer.

Oxfam

What does the Bible say about Global citizenship?



Global Citizens

“Now you are the body of
Christ, and each one of you
is a part of it”

1 Corinthians 12 v27



CLIMATE RISKS: 1.5°C VS 2°C GLOBAL WARMING



EXTREME WEATHER

100% increase in flood risk. vs **170%** increase in flood risk.

SPECIES

6% of insects, **8%** of plants and **4%** of vertebrates will be affected. vs **18%** of insects, **16%** of plants and **8%** of vertebrates will be affected.

WATER AVAILABILITY

350 million urban residents exposed to severe drought by 2100. vs **410 million** urban residents exposed to severe drought by 2100.

ARCTIC SEA ICE

Ice-free summers in the Arctic at least once **every 100 years.** vs Ice-free summers in the Arctic at least once **every 10 years.**

PEOPLE

9% of the world's population (700 million people) will be exposed to extreme heat waves at least once every 20 years. vs **28%** of the world's population (2 billion people) will be exposed to extreme heat waves at least once every 20 years.

SEA-LEVEL RISE

46 million people impacted by sea-level rise of 48cm by 2100. vs **49 million people** impacted by sea-level rise of 56cm by 2100.

OCEANS

Lower risks to marine biodiversity, ecosystems and their ecological functions and services at 1.5°C compared to 2°C.

CORAL BLEACHING

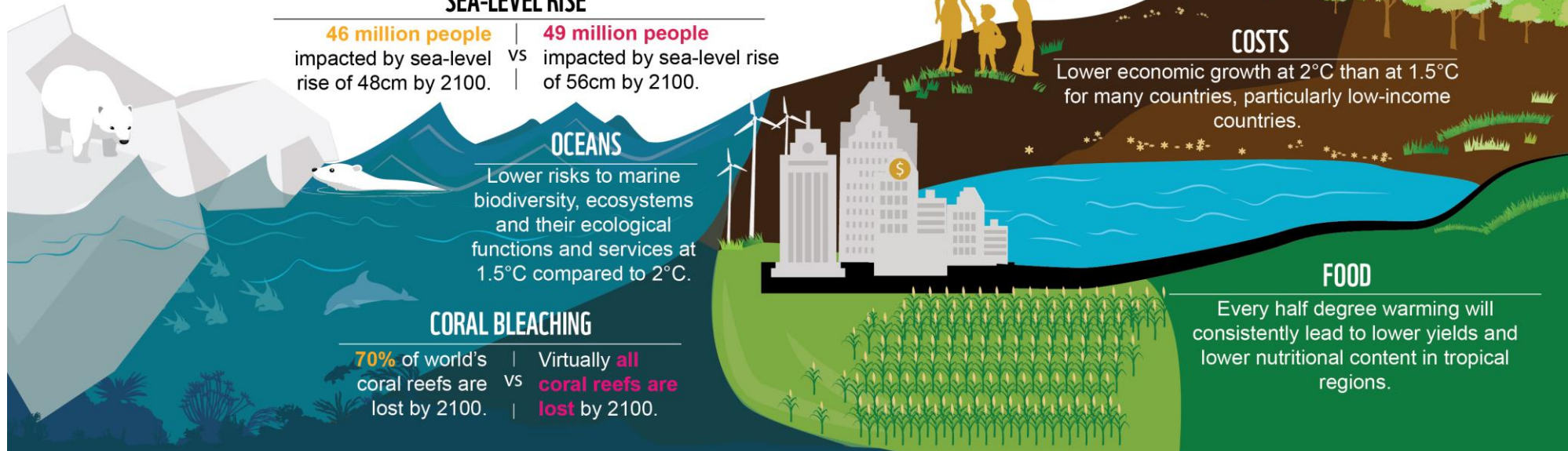
70% of world's coral reefs are lost by 2100. vs Virtually **all coral reefs are lost** by 2100.

COSTS

Lower economic growth at 2°C than at 1.5°C for many countries, particularly low-income countries.

FOOD

Every half degree warming will consistently lead to lower yields and lower nutritional content in tropical regions.



COP26



<https://www.youtube.com/watch?v=grsQEv7R8eg>

**UN CLIMATE
CHANGE
CONFERENCE
UK 2021**

IN PARTNERSHIP WITH ITALY

What can we do to prevent the climate crisis?



Save energy at home



Walk, bike, or take public transport



Eat more vegetables



Consider your travel



Throw away less food



Reduce, reuse, repair, recycle



Change your home's source of energy



Switch to an electric vehicle



Choose eco-friendly products



Speak up

Prayer

Dear God,

Speak to our hearts and help us to see that we are one big family.

Whoever we are, wherever we live, you made us all.

Help us to share, however hard it seems, to make our world fair,

And help us help the world.

Amen.