

Find a Half (1)

Adult Guidance with Question Prompts

Children learn that 'half' means one of two equal parts and 'whole' means complete. Children investigate halving images and objects. They spot, describe and correct inaccuracies as they study representations of halves. Here, children identify which fruits have been halved correctly. They work out the shape of a whole sandwich by looking at the half that is left. They also investigate how many ways the pizza can be sliced in half. It would be great if children had access to playdough and cutting tools, paper and scissors to investigate making different shapes and finding ways to halve them.

Do you agree with the statement? Why / why not?

How would you know if the fruit has been cut in half?

What clues are you looking for?

Tick the boxes by the fruits that show halves.

If this is half of a larger sandwich, what do you think the other half looked like?

When both halves were together, what shape was the whole sandwich? What can we do to work this out?

Do you agree with the statement?

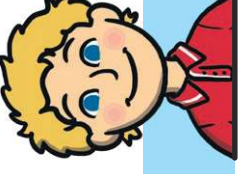
Can you prove it?

How many different ways can you find to halve a square?

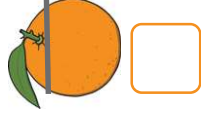


Find a Half (1)

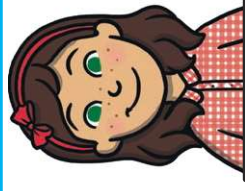
I cut these into 2 parts, so they are all halves.



Tick the fruits that show halves.



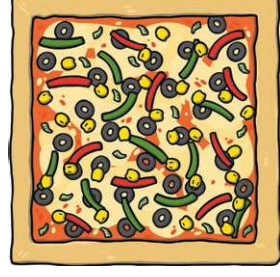
How do you know?



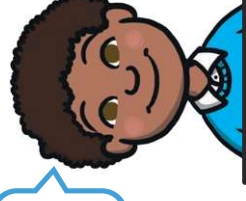
This is half of my sandwich.



What shape was the whole sandwich?



There are only 2 ways to cut this pizza in half.



Do you agree? Can you find a way to prove it?