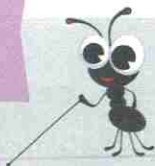


Date: _____

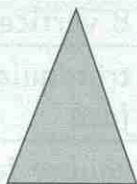
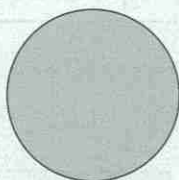
Matching faces to 3-D shapes

Recognise 2-D shapes on 3-D shapes

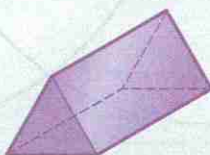
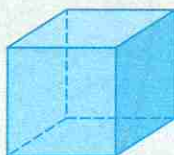
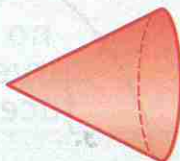
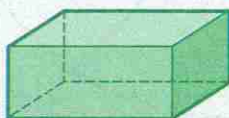
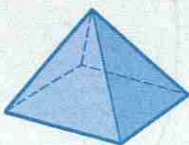


- | | | | | | |
|------------------|--------|--------|----------|------|----------|
| rectangle | circle | square | triangle | cone | pyramid |
| triangular prism | | cube | cuboid | | cylinder |

2-D shapes



3-D shapes



Teacher's notes

Children label all the shapes and then draw lines to match the 2-D faces chosen to the 3-D shapes they

