

Date: _____

Fraction detective

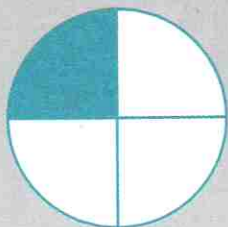
Find fractions $\frac{1}{4}$, $\frac{1}{3}$, $\frac{1}{2}$, $\frac{2}{4}$, $\frac{2}{3}$ and $\frac{3}{4}$ of a number of objects



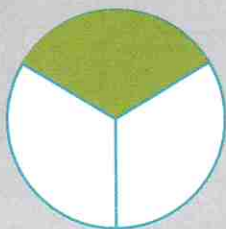
You will need:

- counters or cubes

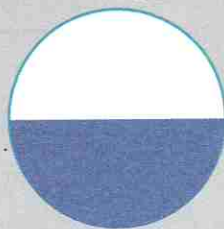
quarter



third



half



6

$\frac{1}{2}$ of 6 =

$\frac{1}{3}$ of 6 =

$\frac{2}{4}$ of 6 =

$\frac{2}{3}$ of 6 =

12

$\frac{2}{4}$ of 12 =

$\frac{2}{3}$ of 12 =

$\frac{3}{4}$ of 12 =

$\frac{1}{2}$ of 12 =

$\frac{1}{3}$ of 12 =

$\frac{1}{4}$ of 12 =

36

$\frac{1}{2}$ of 36 =

$\frac{2}{3}$ of 36 =

$\frac{1}{4}$ of 36 =

$\frac{1}{3}$ of 36 =

$\frac{3}{4}$ of 36 =

$\frac{2}{4}$ of 36 =

?

$\frac{1}{3}$ of = 8

$\frac{3}{4}$ of = 18

$\frac{2}{3}$ of = 16

Teacher's notes

Children use counters or cubes to find the correct fraction of each number. In the last row, children are given the answers and have to work out what number goes in the first box.

