



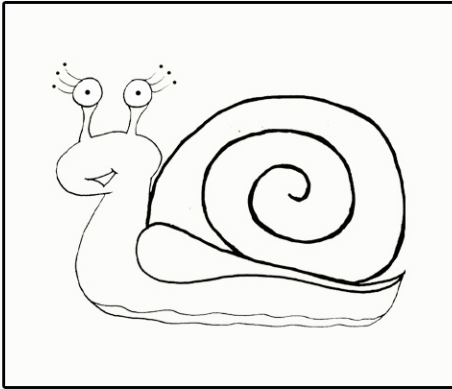
Vertebrates and Invertebrates

Humans are **vertebrates**; we have skeletons to support our bodies.
Animals without skeletons are called **invertebrates**.

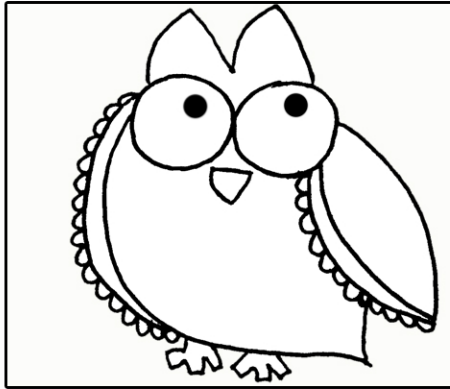
Name

Date

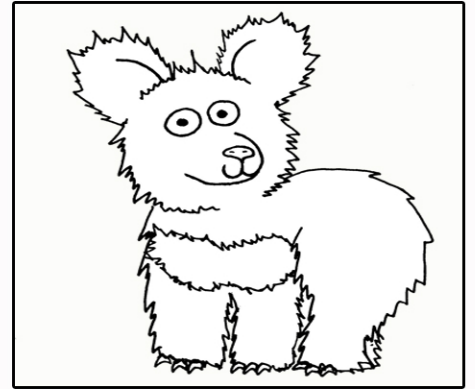
Look at the following animals and label them a vertebrate or an invertebrate



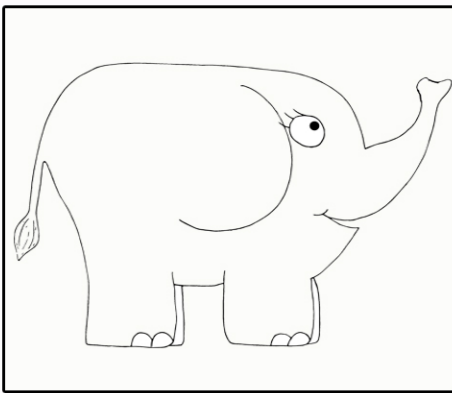
Snail



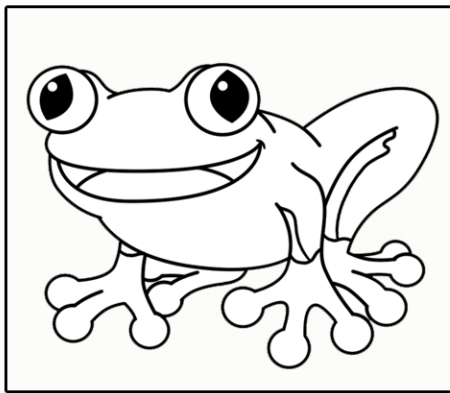
Owl



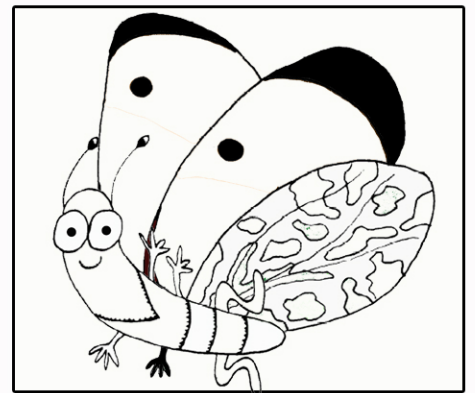
Bear



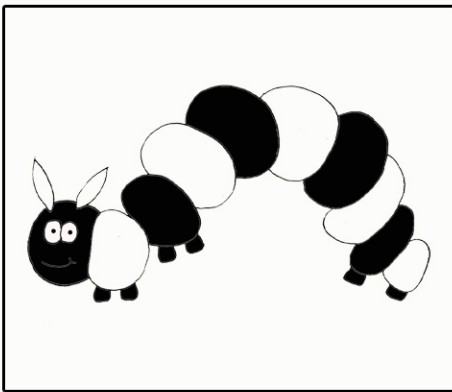
Elephant



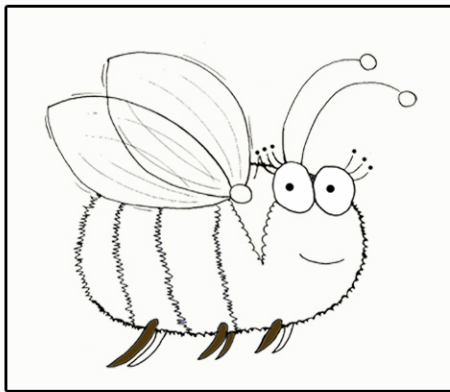
Frog



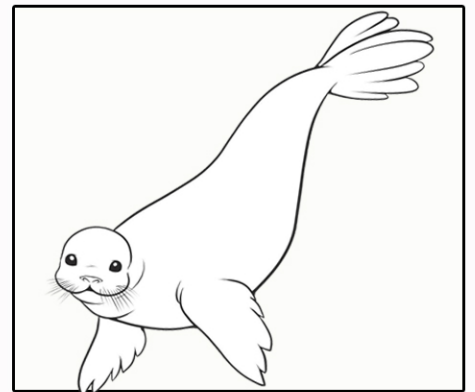
Butterfly



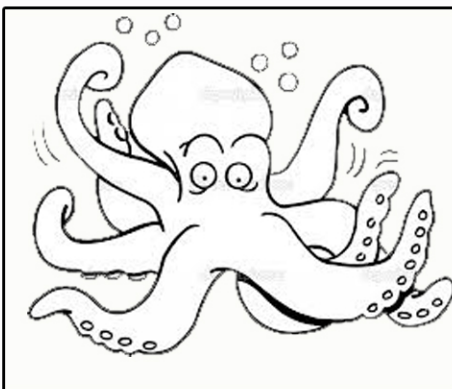
Caterpillar



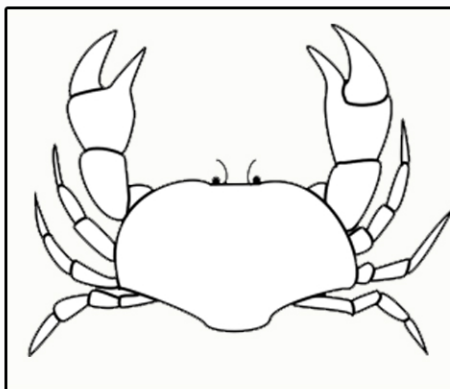
Bee



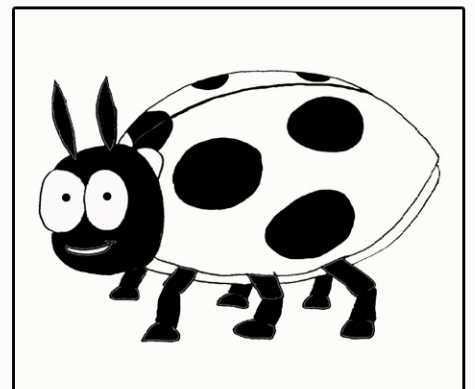
Seal



Octopus



Crab



Ladybird